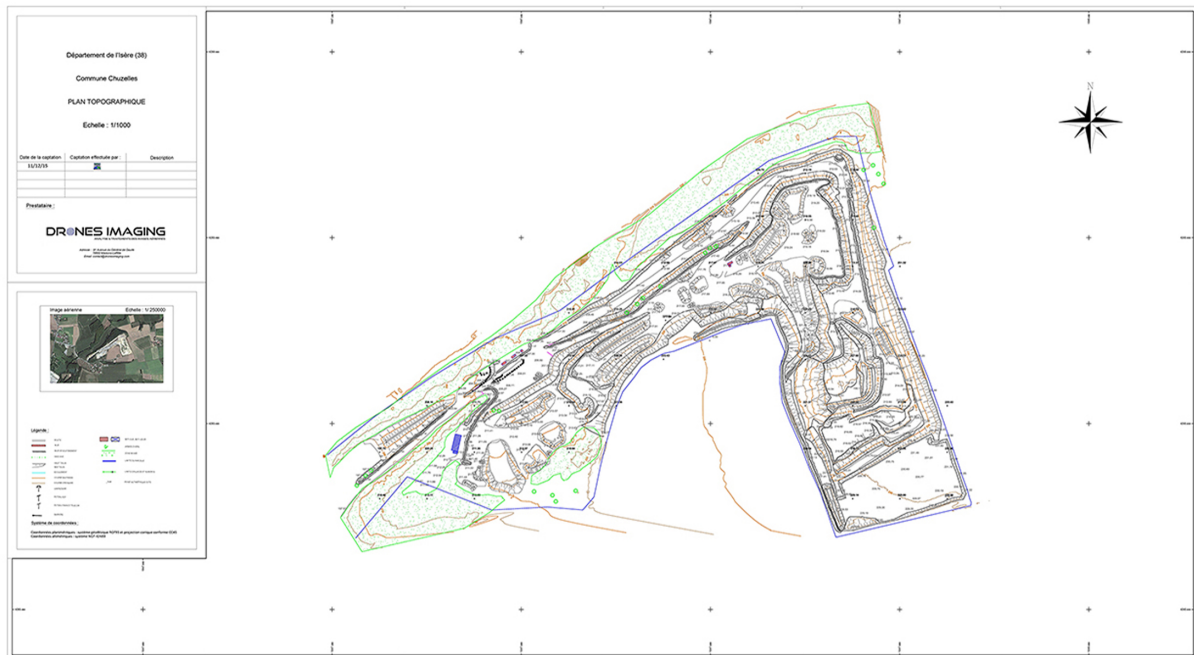
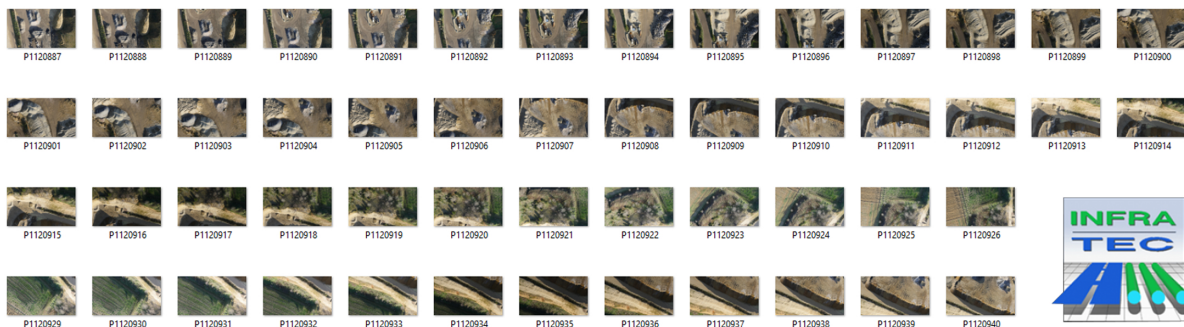


# TOPOGRAPHICAL PLAN



Chuzelles Open quarry (department of Isère), December 2015. Topographic survey conducted from 1436 vertical shots made by the company Infratech and topographic map published by Drones Imaging including:

- contour lines.
- banks, stocks.
- 3D points.
- Infrastructures and superstructures.



## POTENTIAL

CONTOUR LINES  
PROFILES  
CUTTING FACES  
BANKS  
VOLUME CALCULATION

## EXPORTS

POINTS CLOUD (.OBJ / .PLY)  
3D POLYGONAL MODELS (.DXF / .DWG / .3DS)  
DTMs (.DTED / .ASC / .BIL)  
DSMs (.DTED / .ASC / .BIL)  
ORTHOMOSAICS (.JPG / .TIFF / .KML)