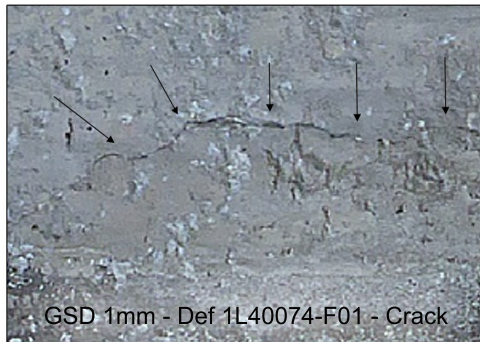
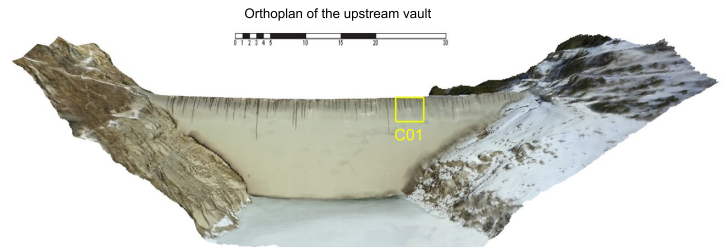
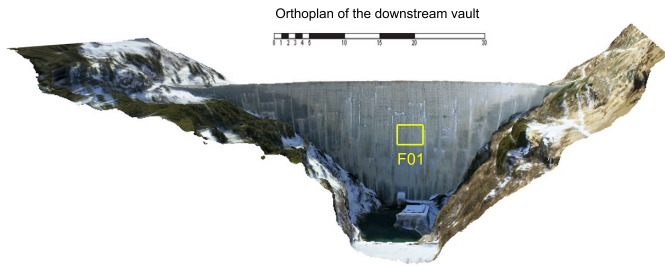


# DAMS



Upstream & downstream orthoplans of the dam facings (Switzerland), August 2015. Work done from 5000 aerial photographs (by facing) made by the AirX3 company with its drone Falcon 8 and a 1mm resolution. Structural analysis of the disorders (cracks, vegetation, infiltration, joints, calcite etc.) and location made on orthoplans by Drones Imaging.



## POTENTIAL

DEFECTS LOCATION  
LENGHT MEASUREMENT  
HEIGHT MEASUREMENT  
SURFACE MEASUREMENT  
DETECTION OF CHANGES

## EXPORTS

POINTS CLOUD (.OBJ / .PLY)  
3D POLYGONAL MODELS (.DXF / .DWG / .3DS)  
GEOREFERENCING (GPS / MARKERS)  
DSMs (.DTED / .ASC / .BIL)  
ORTHOMOSAICS (.JPG / .TIFF / .KML)