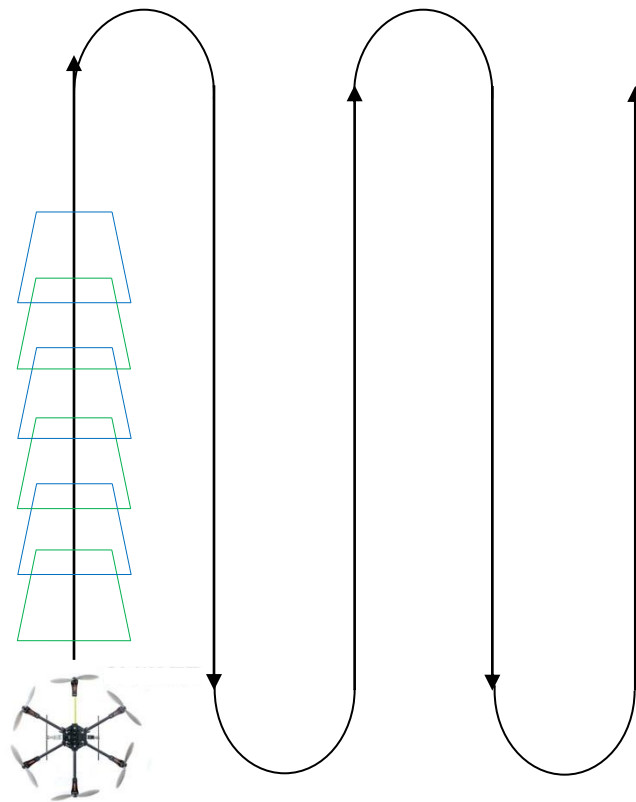
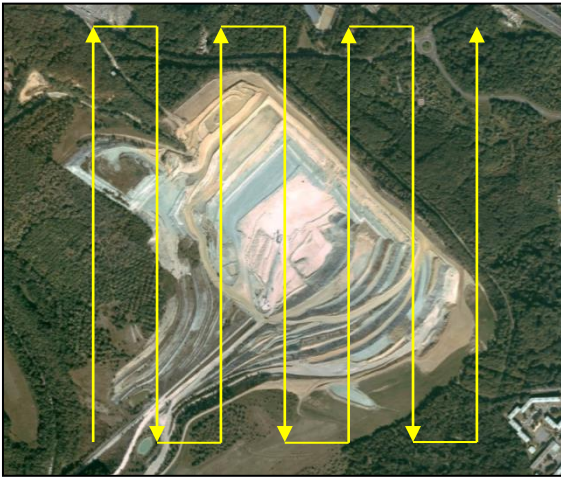
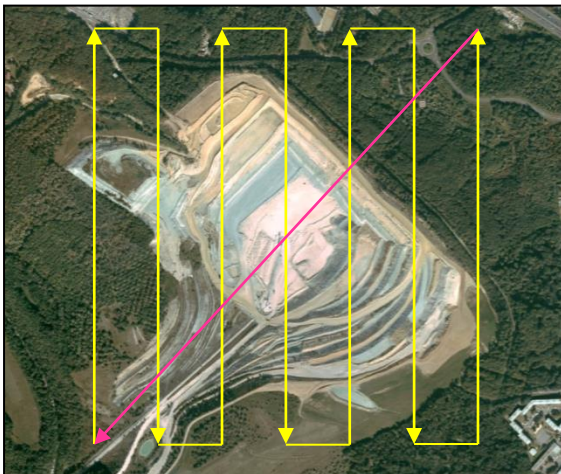


# Guidebook for Flight planning

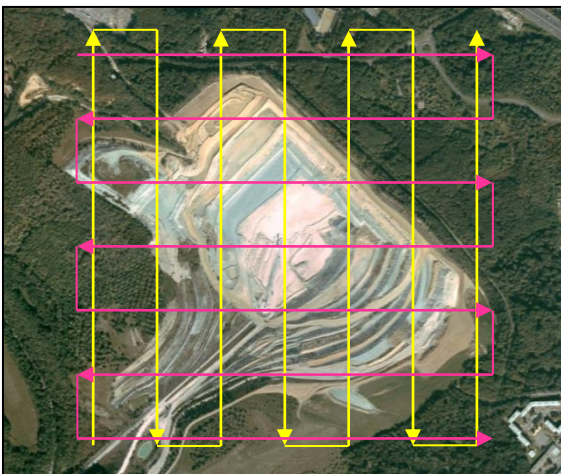




Single flight.  
*Risky procedure*



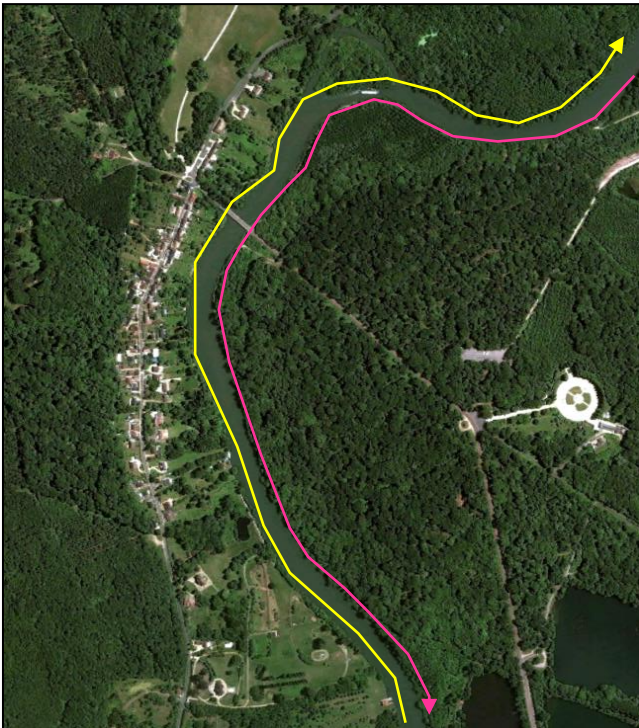
Single flight + transverse strip.  
*Robust procedure*



Dual flight.  
*Optimal procedure*



Simple flight.  
*Risky procedure*



Dual flight.  
*Optimal procedure*



Circular flight with 75% overlap between successive shots.



In this example, the circular flight will allow you to precisely photograph facades.



## GOOD

Vertical shots: 75% overlap



DSC\_4714



DSC\_4715



DSC\_4716



DSC\_4717

High oblique shots



\_DSC0228



\_DSC0229



\_DSC0230



\_DSC0231

## BAD

Vertical shots: insufficient overlap <50%



DSC\_4564



DSC\_4565



DSC\_4566



DSC\_4567

Low oblique shots: too grazing



\_DSC0246



\_DSC0247



\_DSC0248



\_DSC0249